



To customise the output codes just download and install the Configuration Utility from [www.storm-interface.com](http://www.storm-interface.com)  
This lets you do the following :-

Scan the encoder in order to	Confirm the encoder is connected Show which version of firmware is installed Show which keypad is set ( 4, 12 or 16 key) Show which code table is selected ( default, alternate or customised)
------------------------------	---

And also	Change the keypad setting Change the selected code table Change the buzzer volume (450i only ) Change the brightness on illuminated keypads (450i only ) Self test the encoder
----------	--

For re-legendable keypads	Customise the code table by assigning a USB code to each key Add a modifier in front of each USB code Save this configuration Export or Import configuration files
---------------------------	---

For maintenance purposes	Update the encoder firmware if a new version is released Restore all settings to original factory defaults.
--------------------------	--

## F.A.Q's

Does this encoder need a special driver ?	No – it works with the standard USB keyboard driver.
Does the utility work on any pc ?	At present it does not run on Linux or Mac OS. The utility requires Windows 10 or later.

Download from [www.storm-interface.com](http://www.storm-interface.com) and install on a Windows PC (Win 10 or later)

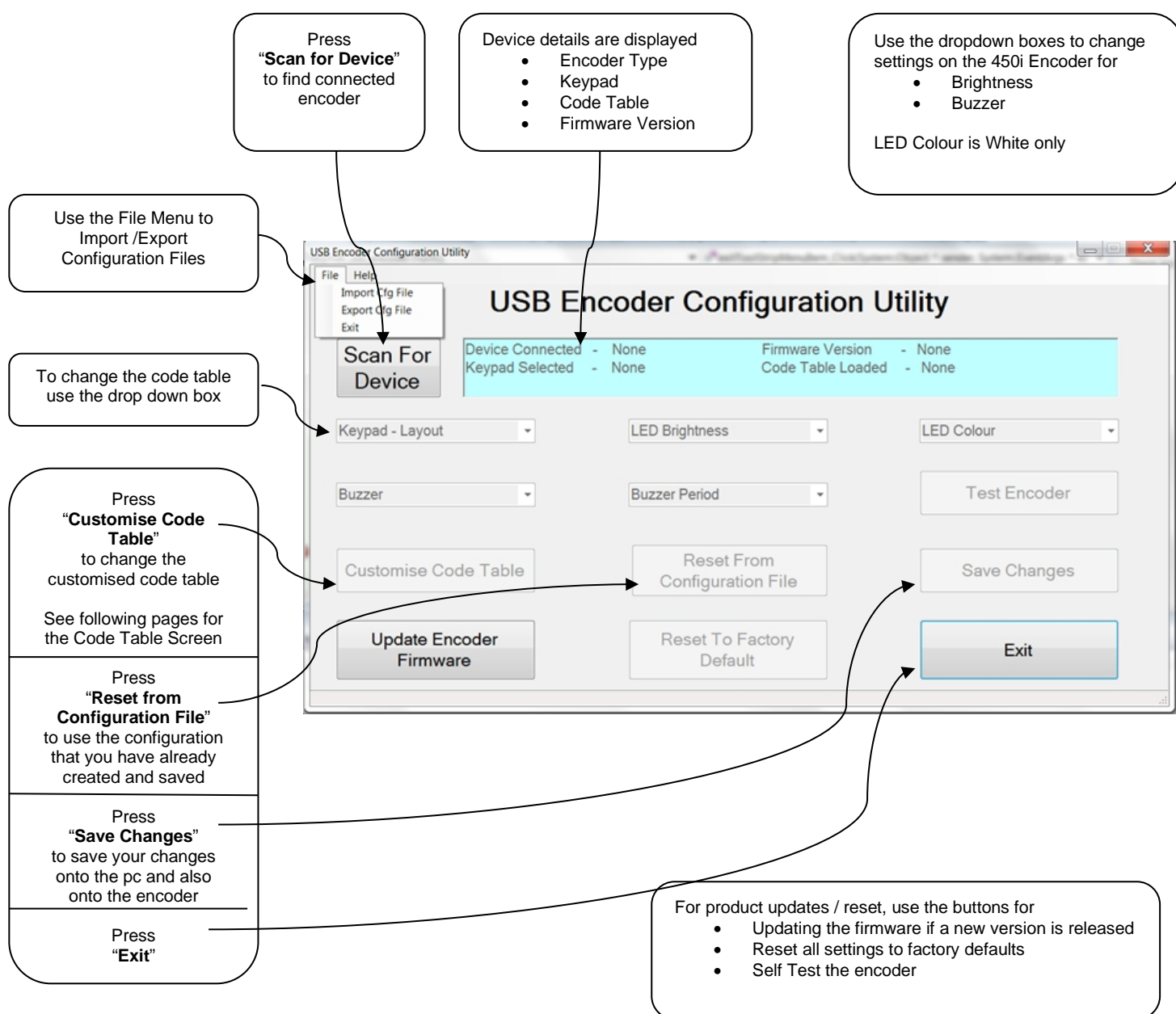
Run the application.

Plug in the encoder + keypad.

Scan the encoder. The configuration will be displayed as below on the home screen.

If you have a standard layout keypad then the output from the default code table will correspond to the keypad  
If you have a keypad designed to allow customisation of keytop graphics then you need to assign a code to each key.

The configuration file is saved to the pc and to the encoder when the **Save Changes** button is pressed.



## Customising the Code Table

The utility displays a screen that shows for each key

- Which USB code is assigned
- Which modifier ( if any ) is applied to the USB code.

Click on each position and select a USB code from the drop down list.

Add a modifier for each position if required.

Press **"Apply"** to reserve your changes. *This does not save the changes at this stage.*

Press **"Close"** to return to the home screen

**"Reset"** reloads the default code table

**Customise 12 Way Code Table (USB Codes in Hex)**

None	0x04	None	0x04	None	0x04	
None	0x04	None	0x04	None	0x04	
None	0x04	None	0x0D	None	0x0D	Reset
None	0x0D	None	0x0D	None	0x0D	Apply
None	0x06	None	0x06	None	0x06	Close

Modifier

USB Code

The full list of USB Codes is shown on the following pages.

USB Codes that have been checked in Word are shown in the relevant column, for example :

			Un-shifted	Shifted
Code	0x04	gives	a	A

Where the same USB code gives a different character dependent on the host language setting then this is shown in the relevant language column.

The actual function of the USB code is determined by the application; not all codes have a function in every application.

## Updating the Firmware

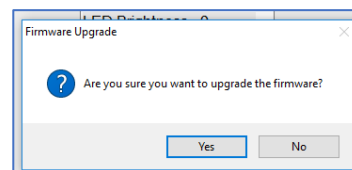
When you update the firmware the utility keeps a copy of your configuration (including any customised codes, and reloads it back on the encoder as part of the firmware update process

Download the new firmware from [www.storm-interface.com](http://www.storm-interface.com),

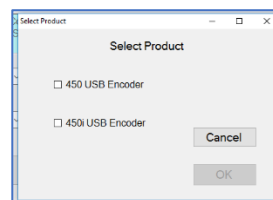
Connect the encoder.

Press **Scan for Device** to find the connected encoder

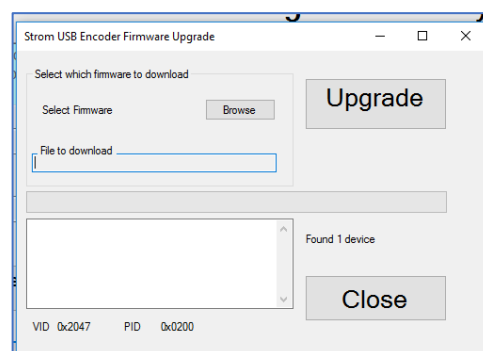
Press **Update Encoder Firmware** and press **Yes**



Select encoder type and press **OK**

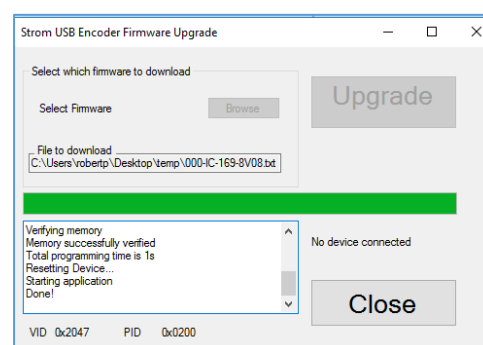


Browse to locate the firmware file and press **Upgrade**



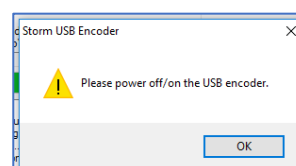
The progress bar shows in green.

When progress is complete press **Close**

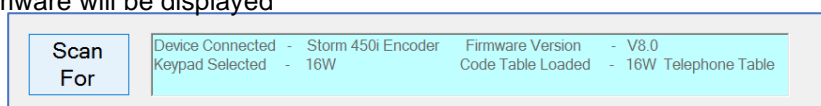


Unplug the cable

Re-connect the cable and press **OK**



Press **Scan For** and the new version of firmware will be displayed



## Full Code Table Reference

450 Series USB Encoder with Firmware  
Revision 8v04  
Using Generic HID Keyboard Driver

When customising the code table on the encoder  
you can place a modifier in front of the USB Code

e.g. E1 , 34 will give you @

450 Series USB Encoder with Firmware Revision 8v04  
Using Generic HID Keyboard Driver

When customising the code table on the encoder you can place a modifier in front of the USB Code

e.g. E1 , 34 will give you @

Any Language differences (using Word)

English U.K. ( if different to U.S.)		English U.S.			French	German	Spanish
Un-shifted	Shifted	Un-shifted	Shifted	Num lock			
00	00	Reserved (no event indicated)			9		
01	01	Keyboard Error Roll Over			9		
02	02	Keyboard POST Fail			9		
03	03	Keyboard Error Undefined			9		
04	04	Keyboard a and A			4		
05	05	Keyboard b and B					
06	06	Keyboard c and C			4		
07	07	Keyboard d and D					
08	08	Keyboard e and E					
09	09	Keyboard f and F					
10	0A	Keyboard g and G					
11	0B	Keyboard h and H					
12	0C	Keyboard i and I					
13	0D	Keyboard j and J					
14	0E	Keyboard k and K					
15	0F	Keyboard l and L					
16	10	Keyboard m and M			4		
17	11	Keyboard n and N					
18	12	Keyboard o and O			4		
19	13	Keyboard p and P			4		
20	14	Keyboard q and Q			4		
21	15	Keyboard r and R					
22	16	Keyboard s and S			4		
23	17	Keyboard t and T					
24	18	Keyboard u and U					
25	19	Keyboard v and V					
26	1A	Keyboard w and W			4		
27	1B	Keyboard x and X			4		
28	1C	Keyboard y and Y			4		
29	1D	Keyboard z and Z			4		
30	1E	Keyboard 1 and !			4		
31	1F	Keyboard 2 and @			4	2	"
32	20	Keyboard 3 and #			4	3	£
33	21	Keyboard 4 and \$			4		
34	22	Keyboard 5 and %			4		
35	23	Keyboard 6 and ^			4		
36	24	Keyboard 7 and &			4		
37	25	Keyboard 8 and *			4		
38	26	Keyboard 9 and (			4		
39	27	Keyboard 0 and )					

450 Series USB Encoder with Firmware Revision 8v04  
Using Generic HID Keyboard Driver

When customising the code table on the encoder you can place a modifier in front of the USB Code

e.g. E1 , 34 will give you @

USB	USB	Usage Name	Note								
Usage ID (Dec)	Usage ID (Hex)			Un-shifted	Shifted	Un-shifted		Shifted	Num lock		
40	28	Keyboard Return (ENTER)	5								
41	29	Keyboard ESCAPE									
42	2A	Keyboard DELETE (Backspace)	13								
43	2B	Keyboard Tab									
44	2C	Keyboard Spacebar									
45	2D	Keyboard - and (underscore)4	4			-		—			
46	2E	Keyboard = and +	4			=		+			
47	2F	Keyboard [ and {	4			[		{			
48	30	Keyboard ] and }	4			]		}			
49	31	Keyboard \ and				\					
50	32	Keyboard Non-US # and ~	2	#	~	\					
51	33	Keyboard ; and :	4			;		:			
52	34	Keyboard ‘ and “	4	‘	@	‘		“			
53	35	Keyboard Grave Accent and Tilde	4			`		~			
54	36	Keyboard, and <	4			,		<			
55	37	Keyboard . and >	4			.		>			
56	38	Keyboard / and ?	4			/		?			
57	39	Keyboard Caps Lock11	11								
58	3A	Keyboard F1				F1					
59	3B	Keyboard F2				F2					
60	3C	Keyboard F3				F3					
61	3D	Keyboard F4				F4					
62	3E	Keyboard F5				F5					
63	3F	Keyboard F6				F6					
64	40	Keyboard F7				F7					
65	41	Keyboard F8				F8					
66	42	Keyboard F9				F9					
67	43	Keyboard F10				F10					
68	44	Keyboard F11				F11					
69	45	Keyboard F12				F12					
70	46	Keyboard PrintScreen	1								
71	47	Keyboard Scroll Lock	11								
72	48	Keyboard Pause	1								
73	49	Keyboard Insert	1								
74	4A	Keyboard Home	1			Home		Select line of text			
75	4B	Keyboard PageUp	1			PgUp		Select text above			
76	4C	Keyboard Delete Forward	1,14			Delete		Select text forward			
77	4D	Keyboard End	1			End		Select to end			

450 Series USB Encoder with Firmware Revision 8v04  
Using Generic HID Keyboard Driver

When customising the code table on the encoder you can place a modifier in front of the USB Code

e.g. E1 , 34 will give you @

				Any Language differences (using Word)						
				English U.K. ( if different to U.S.)		English U.S.		French	German	Spanish
USB Usage ID (Dec)	USB Usage ID (Hex)	Usage Name	Note	Un-shifted	Shifted	Un-shifted	Shifted	Num lock		
78	4E	Keyboard PageDown	1			PgDn	Select to page down			
79	4F	Keyboard RightArrow	1			Goes right	Select to right			
80	50	Keyboard LeftArrow	1			Goes left	Select to left			
81	51	Keyboard DownArrow	1			Goes down	Select line down			
82	52	Keyboard UpArrow	1			Goes up	Select line up			
83	53	Keypad Num Lock and Clear	11			Toggles Numlock				
84	54	Keypad /	1			/				
85	55	Keypad *				*				
86	56	Keypad -				-				
87	57	Keypad +				+				
88	58	Keypad ENTER				Enter				
89	59	Keypad 1 and End				End		1		
90	5A	Keypad 2 and Down Arrow				Down arrow		2		
91	5B	Keypad 3 and PageDn				Page down		3		
92	5C	Keypad 4 and Left Arrow				Left arrow		4		
93	5D	Keypad 5						5		
94	5E	Keypad 6 and Right Arrow				Right arrow		6		
95	5F	Keypad 7 and Home				Home		7		
96	60	Keypad 8 and Up Arrow				Up arrow		8		
97	61	Keypad 9 and PageUp				Page up		9		
98	62	Keypad 0 and Insert						0		
99	63	Keypad . and Delete				.		.		
100	64	Keyboard Non-US \ and	3,6			\				
101	65	Keyboard Application	12							
102	66	Keyboard Power	9							
103	67	Keypad =				= on Mac O/S only				
104	68	Keyboard F13								
105	69	Keyboard F14								
106	6A	Keyboard F15								
107	6B	Keyboard F16								
108	6C	Keyboard F17								
109	6D	Keyboard F18								
110	6E	Keyboard F19								
111	6F	Keyboard F20								
112	70	Keyboard F21								





# 450 Series USB Encoder Configuration Utility

450 Series USB Encoder with Firmware Revision 8v04  
Using Generic HID Keyboard Driver

When customising the code table on the encoder you can place a modifier in front of the USB Code

e.g. E1 , 34 will give you @

Any Language differences (using Word)

USB		Usage Name	Note	English U.K. ( if different to U.S.)		English U.S.			French	German	Spanish
Usage ID (Dec)	Usage ID (Hex)			Un-shifted	Shifted	Un-shifted	Shifted	Num lock			
113	71	Keyboard F22									
114	72	Keyboard F23									
115	73	Keyboard F24									
116	74	Keyboard Execute									
117	75	Keyboard Help									
118	76	Keyboard Menu									
119	77	Keyboard Select									
120	78	Keyboard Stop									
121	79	Keyboard Again									
122	7A	Keyboard Undo									
123	7B	Keyboard Cut									
124	7C	Keyboard Copy									
125	7D	Keyboard Paste									
126	7E	Keyboard Find									
127	7F	Keyboard Mute									
128	80	Keyboard Volume Up									
129	81	Keyboard Volume Down									
130	82	Keyboard Locking Caps Lock	12								
131	83	Keyboard Locking Num Lock	12								
132	84	Keyboard Locking Scroll Lock	12								
133	85	Keypad Comma	27								
134	86	Keypad Equal Sign	29								
135	87	Keyboard International115									
136	88	Keyboard International216									
137	89	Keyboard International317									
138	8A	Keyboard International418									
139	8B	Keyboard International519									
140	8C	Keyboard International620									
141	8D	Keyboard International721									
142	8E	Keyboard International822									
143	8F	Keyboard International922									
144	90	Keyboard LANG125									





e.g. E1 , 34 will give you @

English  
U.K.  
( if different  
to U.S.)

French

German

Spanish

224	E0	Keyboard LeftControl	
225	E1	Keyboard LeftShift	
226	E2	Keyboard LeftAlt	
227	E3	Keyboard Left GUI	10,23
228	E4	Keyboard RightControl	
229	E5	Keyboard RightShift	
230	E6	Keyboard RightAlt	
231	E7	Keyboard Right GUI	10,24

## Notes on the Code Tables 1-15, 20-34

1 Usage of keys is not modified by the state of the Control, Alt, Shift or Num Lock keys. That is, a key does not send extra codes to compensate for the state of any Control, Alt, Shift or Num Lock keys.

2 Typical language mappings: US: \ | Belg: fÊ`' FrCa: <> Dan:~f\* Dutch: <> Fren:\*fÊ Ger: #~f Ital: u~ LatAm: }` Nor:,\* Span: }C Swed: ,\* Swiss: \$~ UK: #~.

3 Typical language mappings: Belg:<\> FrCa:~á~<~â Dan:<\> Dutch:]] [ Fren:<> Ger:<|> Ital:<> LatAm:<> Nor:<> Span:<> Swed:<|> Swiss:<\> UK:\ | Brazil: \ |.

4 Typically remapped for other languages in the host system.

5 Keyboard Enter and Keypad Enter generate different Usage codes.

6 Typically near the Left-Shift key in AT-102 implementations.

7 Example, Erase-Eaze. key.

8 Reserved for language-specific functions, such as Front End Processors and Input Method Editors.

9 Reserved for typical keyboard status or keyboard errors. Sent as a member of the keyboard array. Not a physical key.

10 Windows key for Windows 95, and ~gCompose.~h

11 Implemented as a non-locking key; sent as member of an array.

12 Implemented as a locking key; sent as a toggle button. Available for legacy support; however, most systems should use the non-locking version of this key.

13 Backs up the cursor one position, deleting a character as it goes.

14 Deletes one character without changing position.

15-20 See additional foot notes in the USB spec

21 Toggle double-byte/single-byte mode

22 Undefined, available for other front end language processors

23 Windowing environment key, examples are Microsoft left win key, mac left apple key, sun left meta key

24 Windowing environment key, example are Microsoft right win key, macintosh right apple key, sun right meta key



## Copyright Notice

This document is provided for use and guidance of engineering personnel engaged in the installation or application of Storm Interface data entry products manufactured by Keymat Technology Ltd. Please be advised that all information, data and illustrations contained within this document remain the exclusive property of Keymat Technology Ltd. and are provided for the express and exclusive use as described above.

This document is not supported by Keymat Technology's engineering change note, revision or reissue system. Data contained within this document is subject to periodic revision, reissue or withdrawal. Whilst every effort is made to ensure the information, data and illustrations are correct at the time of publication, Keymat Technology Ltd. are not responsible for any errors or omissions contained within this document.

No part of this document may be reproduced in any form or by any means or used to make any derivative work (such as translation or adaptation) without written permission from Keymat Technology Ltd.

For more information about Storm Interface and its products, please visit our website at [www.storm-interface.com](http://www.storm-interface.com) © Copyright Storm Interface. 2013 All rights reserved

=====

### Copyright Acknowledgement

This product uses binary format of the hidapi dll, Copyright (c) 2010, Alan Ott, Signal 11 Software. All rights reserved.

THIS SOFTWARE IS PROVIDED BY THE COPYRIGHT HOLDERS AND CONTRIBUTORS "AS IS" AND ANY EXPRESS OR IMPLIED WARRANTIES, INCLUDING, BUT NOT LIMITED TO, THE IMPLIED WARRANTIES OF MERCHANTABILITY AND FITNESS FOR A PARTICULAR PURPOSE ARE DISCLAIMED. IN NO EVENT SHALL THE COPYRIGHT HOLDER OR CONTRIBUTORS BE LIABLE FOR ANY DIRECT, INDIRECT, INCIDENTAL, SPECIAL, EXEMPLARY, OR CONSEQUENTIAL DAMAGES (INCLUDING, BUT NOT LIMITED TO, PROCUREMENT OF SUBSTITUTE GOODS OR SERVICES; LOSS OF USE, DATA, OR PROFITS; OR BUSINESS INTERRUPTION) HOWEVER CAUSED AND ON ANY THEORY OF LIABILITY, WHETHER IN CONTRACT, STRICT LIABILITY, OR TORT (INCLUDING NEGLIGENCE OR OTHERWISE) ARISING IN ANY WAY OUT OF THE USE OF THIS SOFTWARE, EVEN IF ADVISED OF THE POSSIBILITY OF SUCH DAMAGE.



## Change History

Instructions for Config Utility	<u>Date</u>	<u>Version</u>	<u>Details</u>	
	16 Aug 24	1.0	Split out from Engineering Manual	

USB Configuration Utility	<u>Date</u>	<u>Version</u>	<u>Details</u>
4500-SW01	1 Aug 13	2.1	First Release
	20 Aug 13	3.0	Increased size of modifier button + Increased size of Select Code Combo box.
	12 Nov 13	4.0	Update in line with 8v04 release
	01 Feb 22	5.1	Update user agreement wording