

storm SF8000 Series Keypads



Compact PIN entry keypad for use where panel space is limited

- **Impact resistant**
20J BS EN 60068-2-75: 1997)
- **Responsive numeric keypad**
featuring patented Storm switching technology
- **Certified tamper-responsive and attack resistant counter-measures**
are an integral feature of all Storm 8000 Series products
- **Fire resistant and petrochemical resistant versions available**
- **High contrast, high visibility keytop graphics with raised tactile symbols**
improve accessibility for those with sensory impairment
- **PIN encryption technology is not included or supplied by Storm.**
A version of this product, as an EPP (encrypted PINpad), with secure data transmission, is available from Storm approved technology partners
- **Can be sanitised using most commonly used cleaning agents**



UK Email: sales@storm-interface.com Tel: +44 (0)1895 431421
USA Email: sales.usa@storm-keypads.com Tel: +1 (630) 472 5360

www.storm-interface.com

Storm Interface products include technology protected by international patents and design registration. All rights reserved.



Small Footprint SF8000 Series Keypad - Installation Instructions

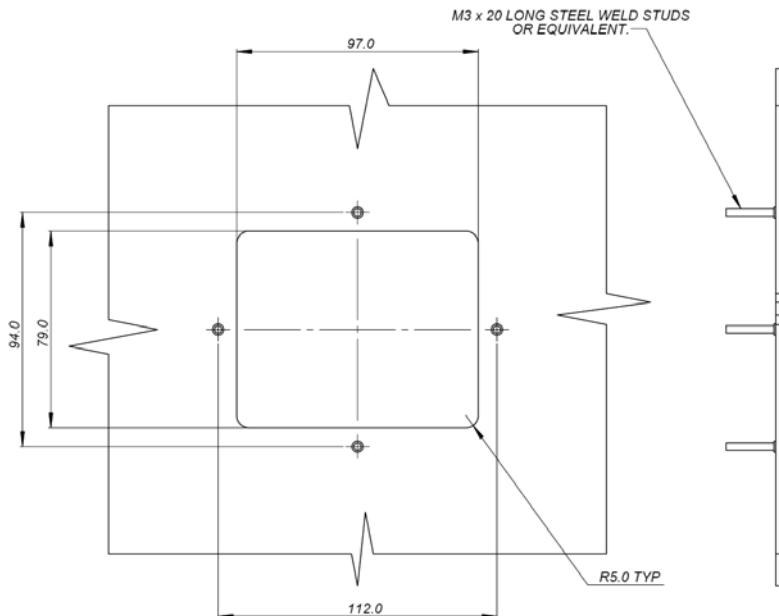
SPECIFICATIONS

Vandal Resistant	20J BS EN 60068-2-75:1997	Panel Cutout	97mm x 79mm
Weather Resistant	IP65	Underpanel Depth	10.8 mm
Operating Temp	-20°C to +60°C	Matrix Output	For elastomer connection (elastomer & support included)
Standard Keypad Size Buttons	11 mm square,	Contact Resistance	100 ohms (max)
Compact Layout	16 mm pitch	Switch Rating	24V d.c. (max), 50 mA (max)
DDA Compatibility	Raised Symbols on Keys	Illumination	Separate connector (+5V DC)
Responsive key action	Travel 1.5 mm, Actuation force 150 gm, Life 4 million cycles	Fixing Bracket not included	
Housing	Flame Retardant & Petrochem. Resistant	Panel Mount Gasket Included	
Keypad Material	Laser Marked Polymer or Illuminated	Electrical Safety	UL Approved (EN60950)

KEYPAD FRONT VIEW

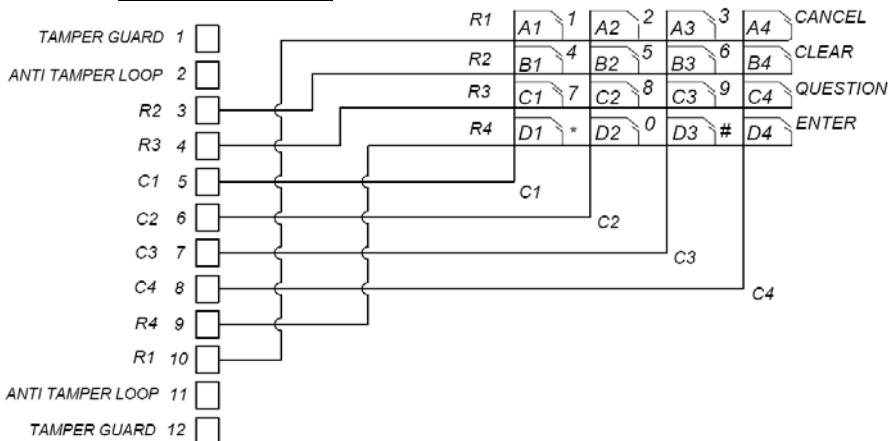


HOST PANEL CUTOUT



Suitable panel thickness 1.6mm to 2.0mm steel. For device removal sensor applications one stud must be longer.

Contact Connections



ORDERING DETAILS

Stock No	Item
8616 - 2 [xx]	SF8000 16 KEY, MATRIX PAD O/P, *(V-0), UK LAYOUT
8615 - 2 [xx]	SF8000 15 KEY, MATRIX PAD O/P, (V-0), UK LAYOUT
8616 - 4 [xx]	SF8000 16 KEY, MATRIX PAD O/P, (V-0), BACKLIT, UK LAYOUT
8615 - 4 [xx]	SF8000 15 KEY, MATRIX PAD O/P, (V-0), BACKLIT, UK LAYOUT

[xx] - denotes additional digits to be added for OEM backplate and customisation options - contact your Storm Distributor for details.

*(V-0) denotes keypad housing meets UL94 V-0 flammability specification.

Whilst every effort is made to ensure details are correct at time of print, specifications are subject to change without notice.



FM 39602

UK Office
Storm Interface 14 Bentinck Ct,
 Bentinck Road, West Drayton,
 UB7 7RQ, England
 Tel: +44 (0)1895 431421
 Fax: +44 (0)1895 431132
 Email: sales@keymat.com

USA Office
Storm Interface
 Suite 110 @ 600 Enterprise Drive
 Oakbrook, Illinois 60523
 Tel: (630) 472 5360
 Fax: (630) 472 5364

Email: sales.usa@storm-keypads.com

www.storm-interface.com